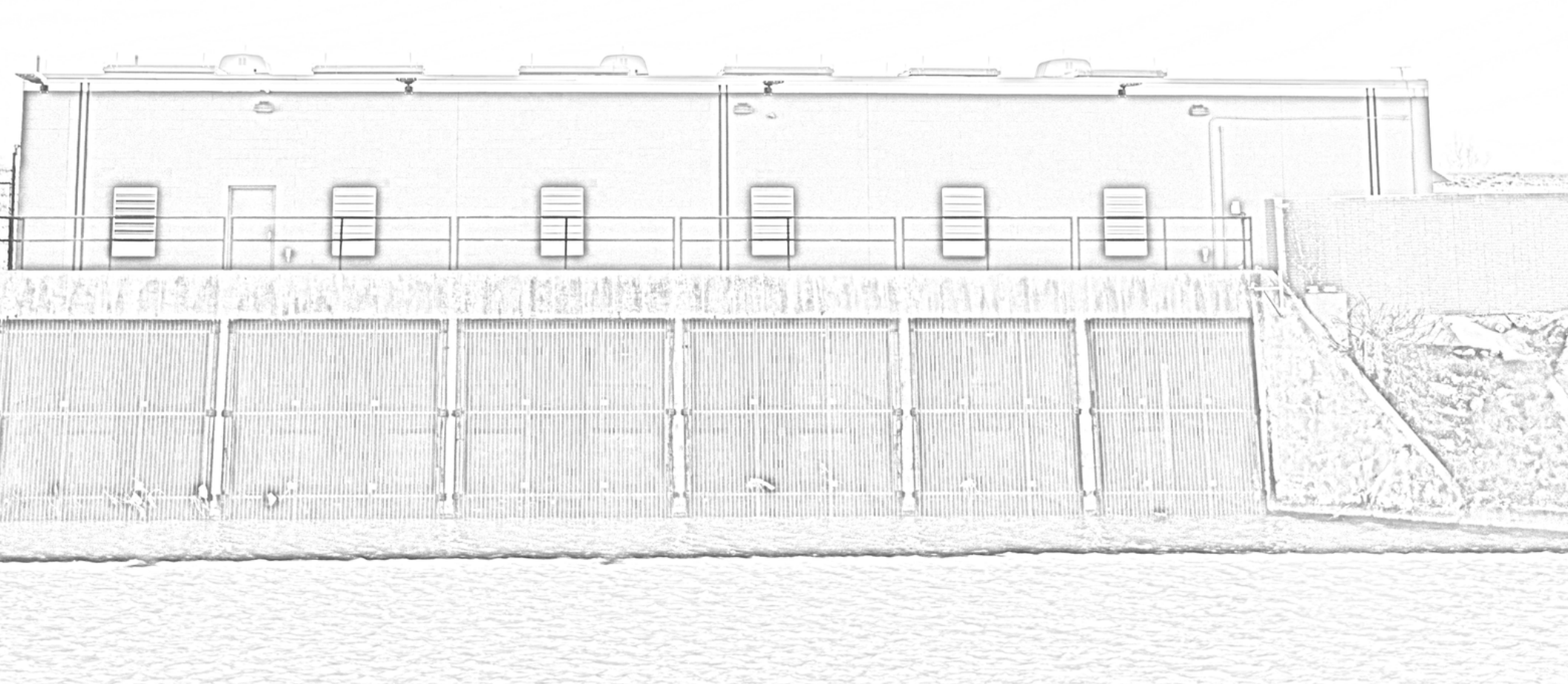


Coloring Book



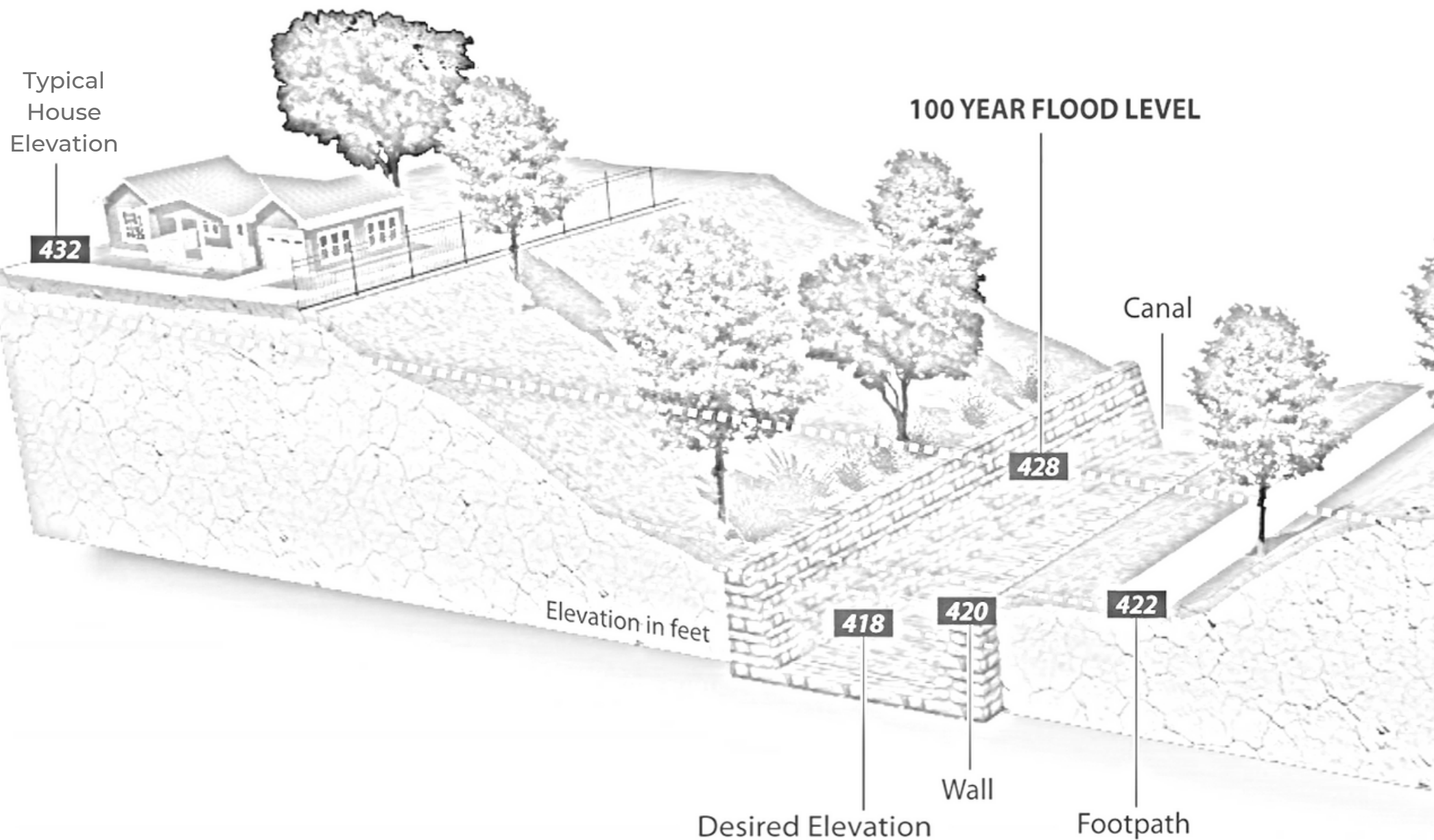
Help IFCD 3 bring Valley Ranch to life by coloring the buildings, fields, canals and trees found throughout Valley Ranch.



When it rains, water flows away from houses and into canals. In addition to storing water, Valley Ranch's canals are also home to local animals, like ducks, turtles and small fish!



To help people and cars travel safely across town, Valley Ranch created bridges over some of its canals.



The houses in Valley Ranch are built at a higher elevation so that when it rains, water stays close to canals and away from homes.



Valley Ranch has parks and sidewalks to help us enjoy the outdoors. Many of our sidewalks are located near the canals!



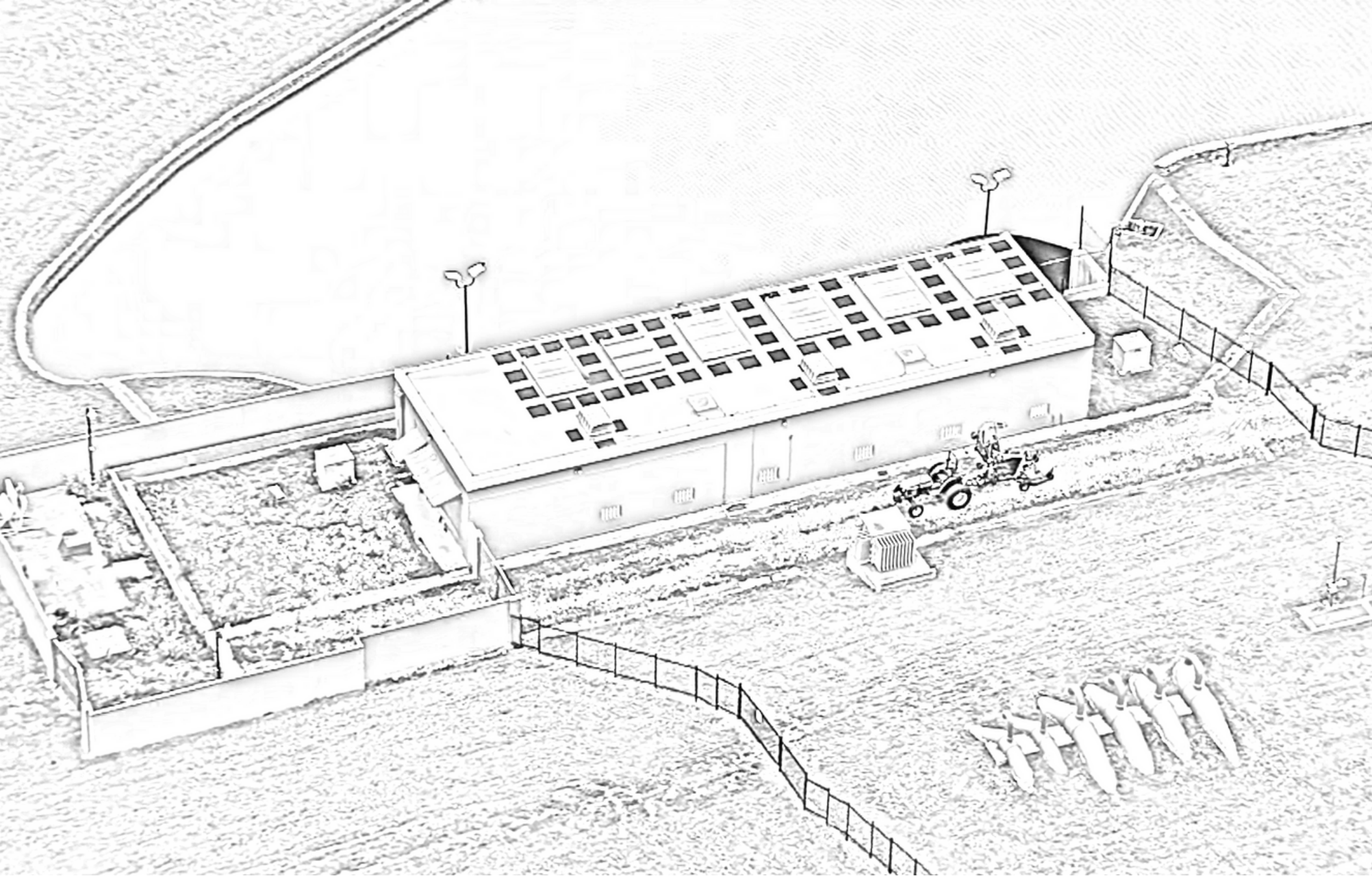
This man-made hill, also known as a levee, was built to limit the amount of river water that flows into Valley Ranch.



Sometimes, weather can cause the edge of canals to wear away. Construction projects help us fix the canal edges to make sure they continue to work well.



Many homes in Valley Ranch can see the canals from their backyard. Can you see the canals from your house?



When it rains, it can make the water level rise. To prevent the water from going towards houses, our pump station will turn on machines that move water to the other side of the levee.