



Welcome to IFCD 3 For Kids

Let's learn about weather and flood control!

Welcome!

We are going to embark on an exciting journey to learn about the weather of Valley Ranch.

We will also learn about the history of Valley Ranch, flooding and how our community prepares for storms.





Key Words and Their Meaning

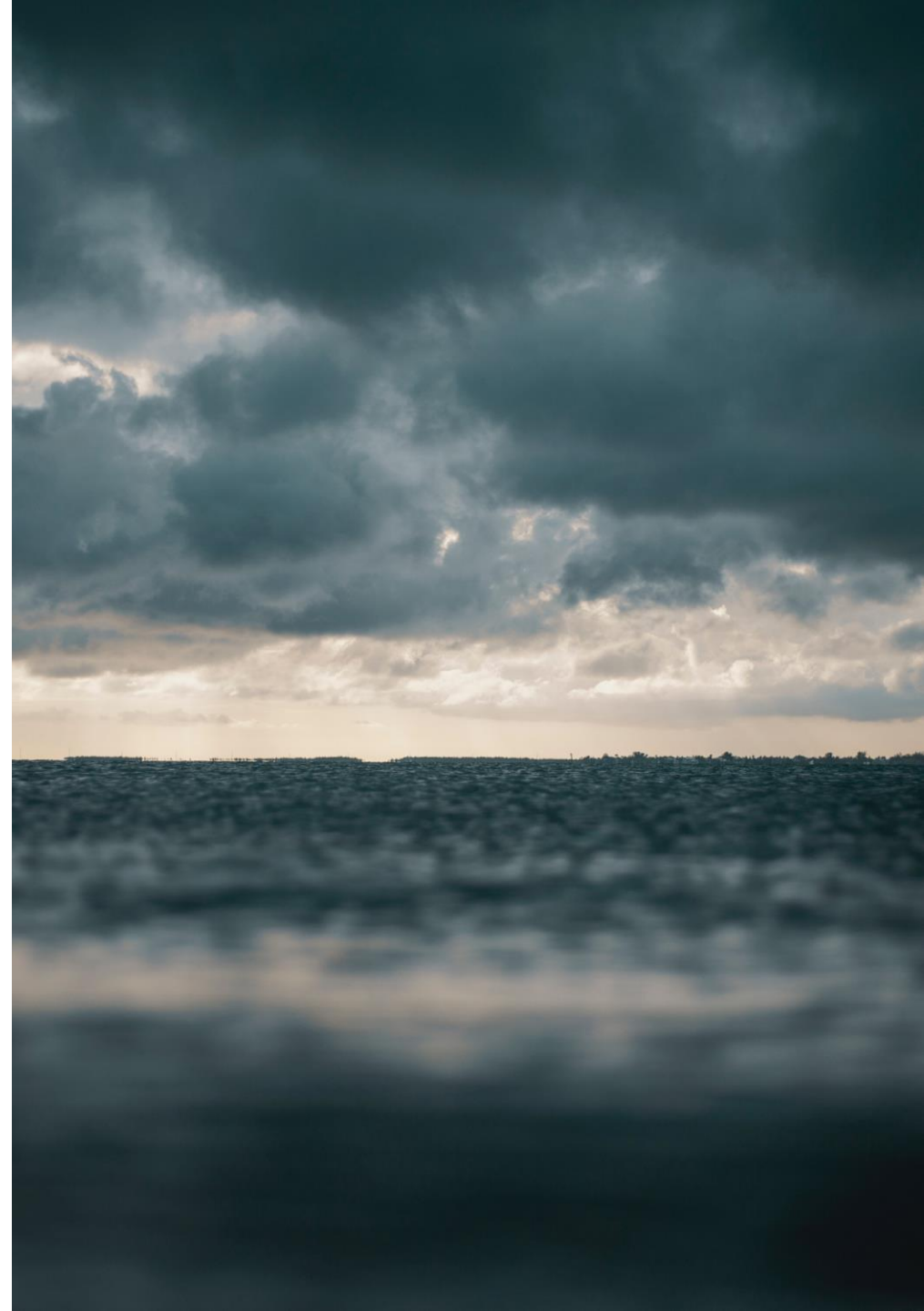
Key Words

The first part of this lesson is to learn new words related to weather.

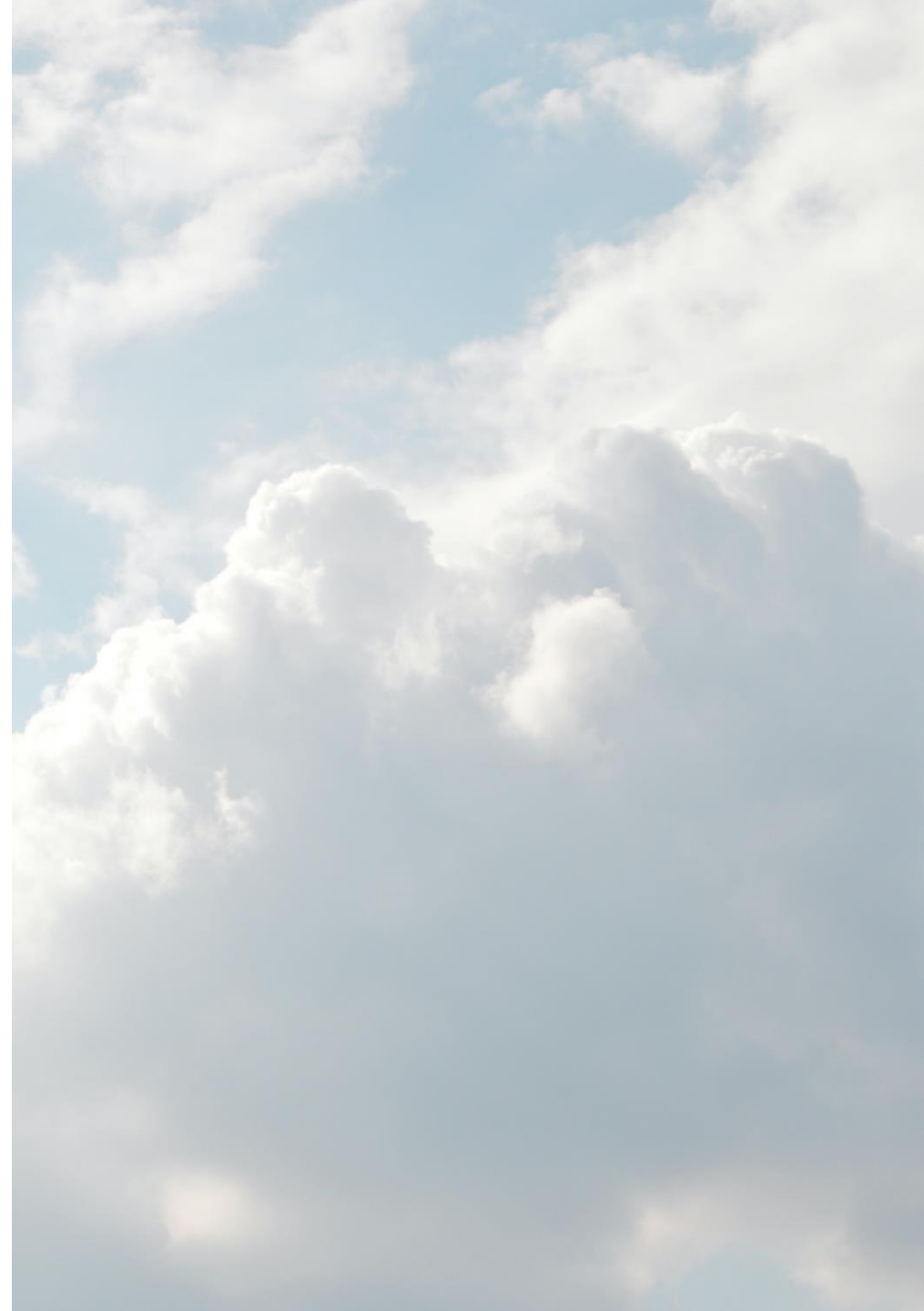
Let's dive in!



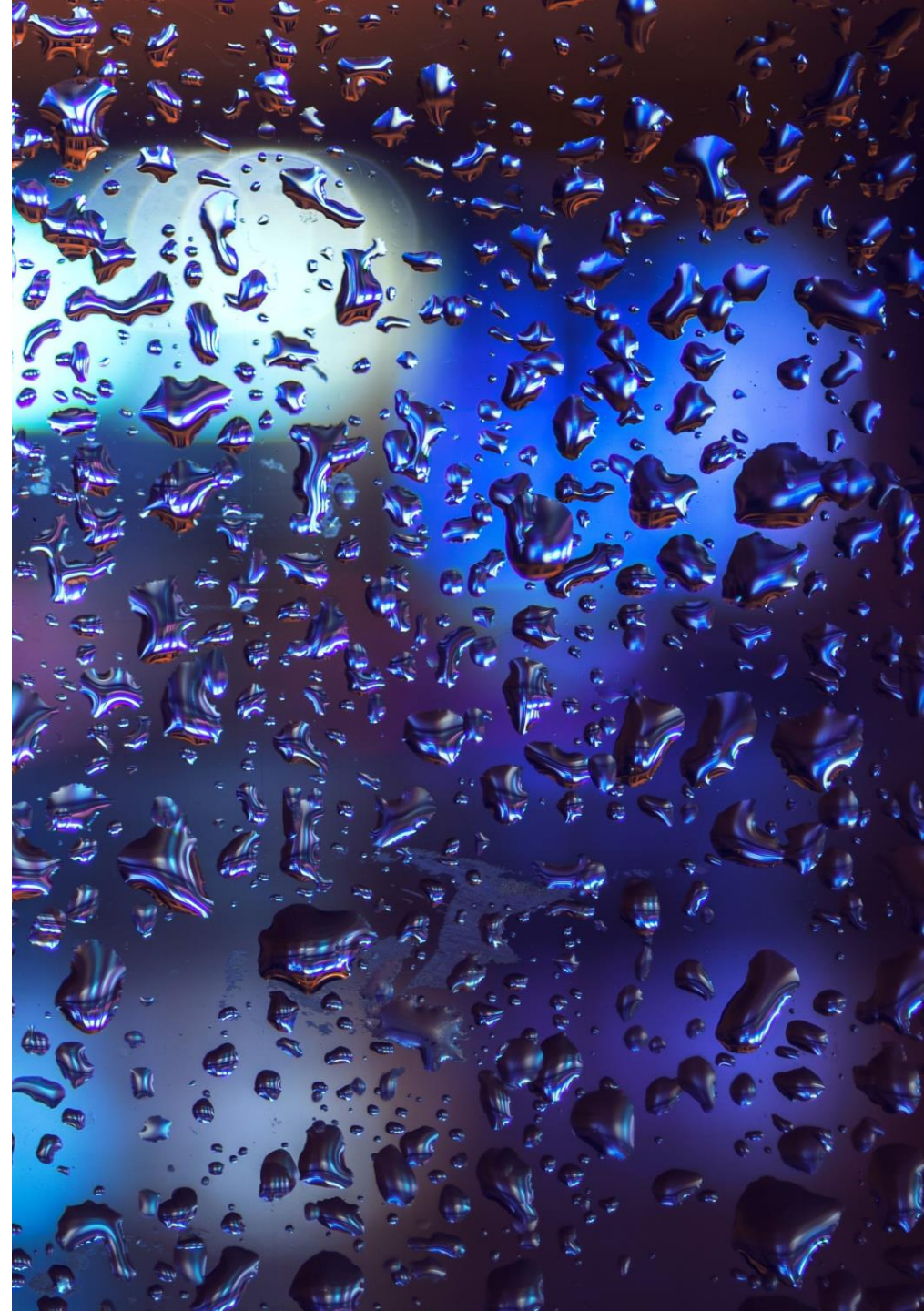
Weather – what the sky and the air outside looks or feels like.



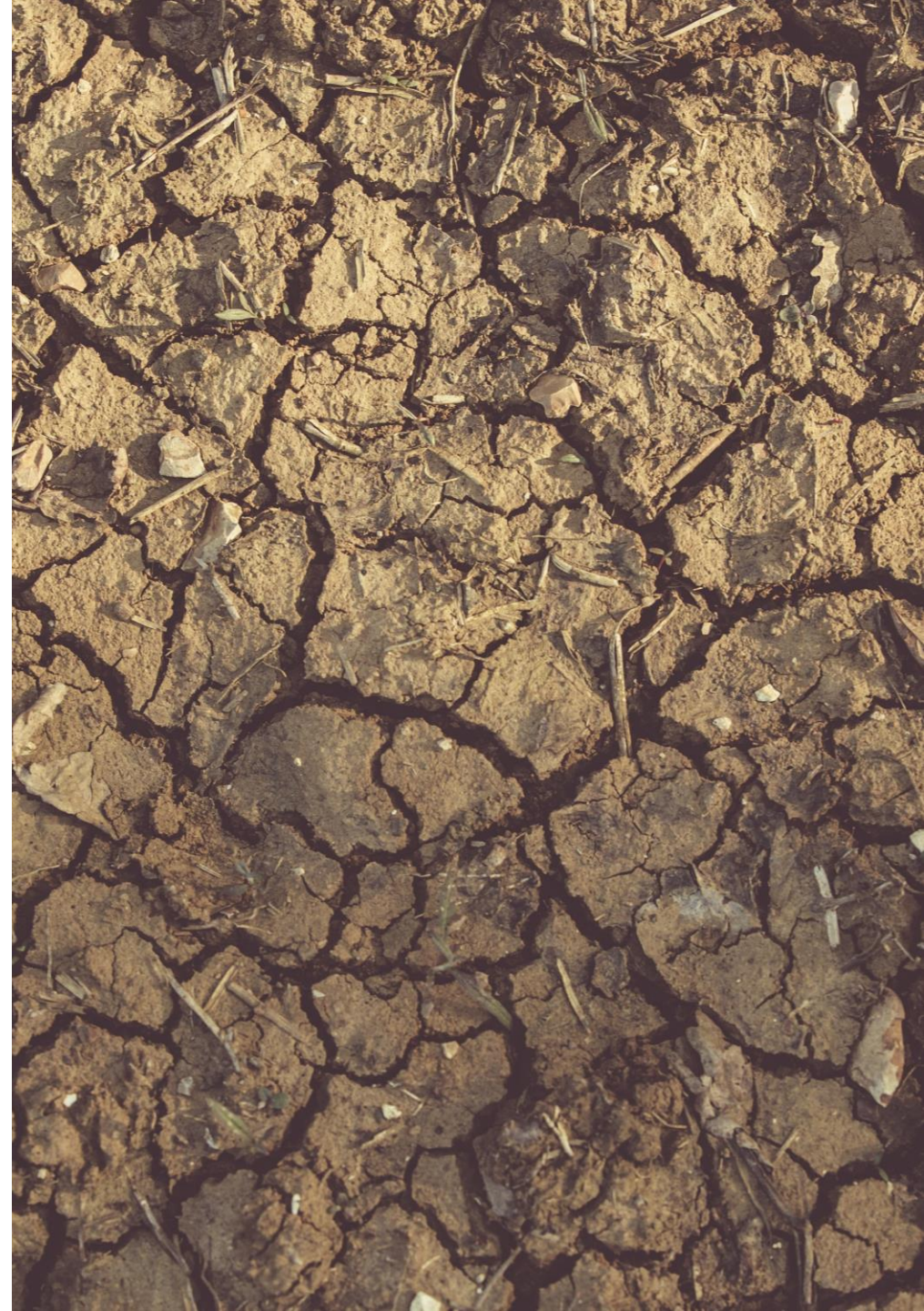
Cloud – a visible mass of particles of water or ice, usually high in the air



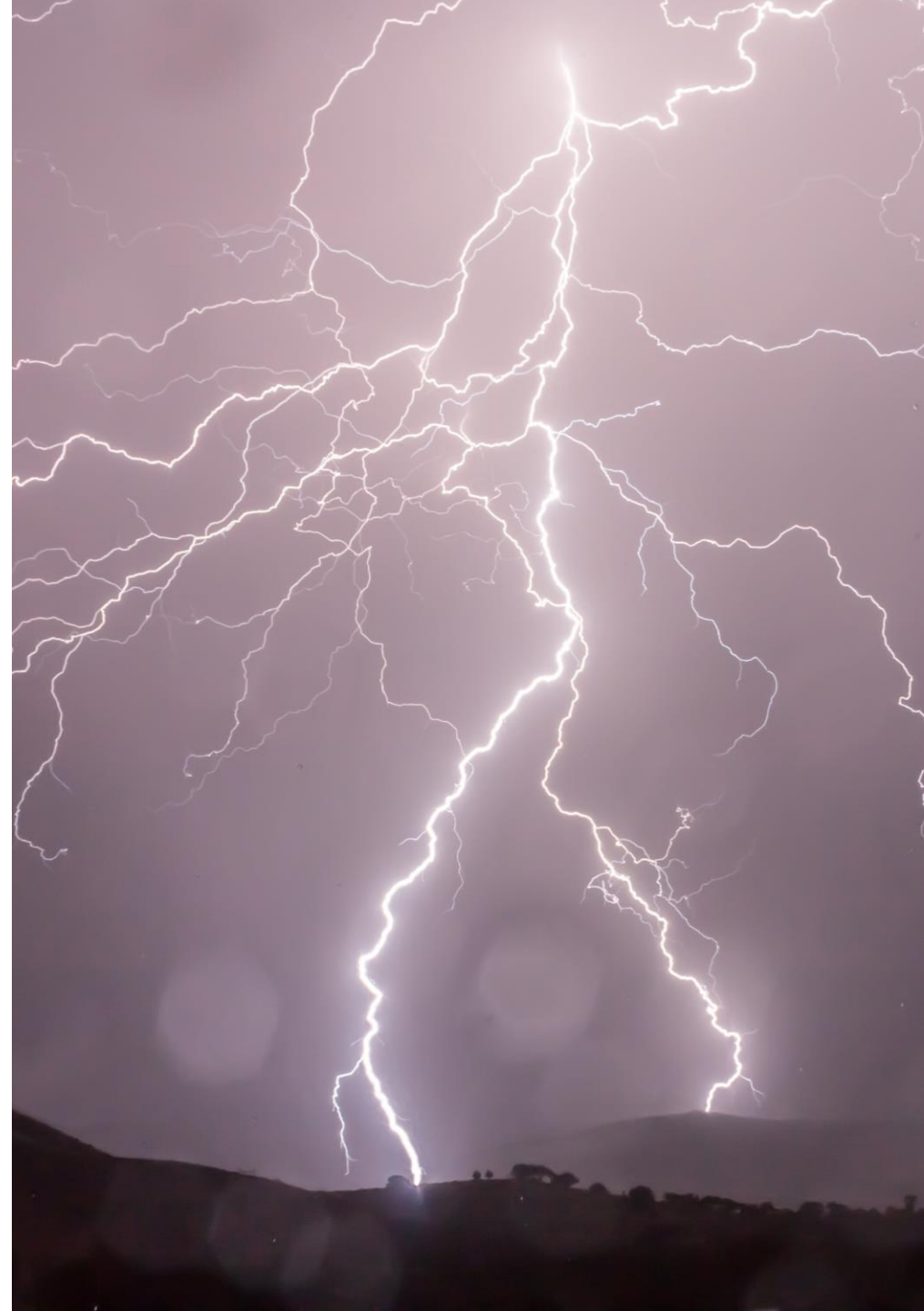
Rain – water falling in drops from clouds



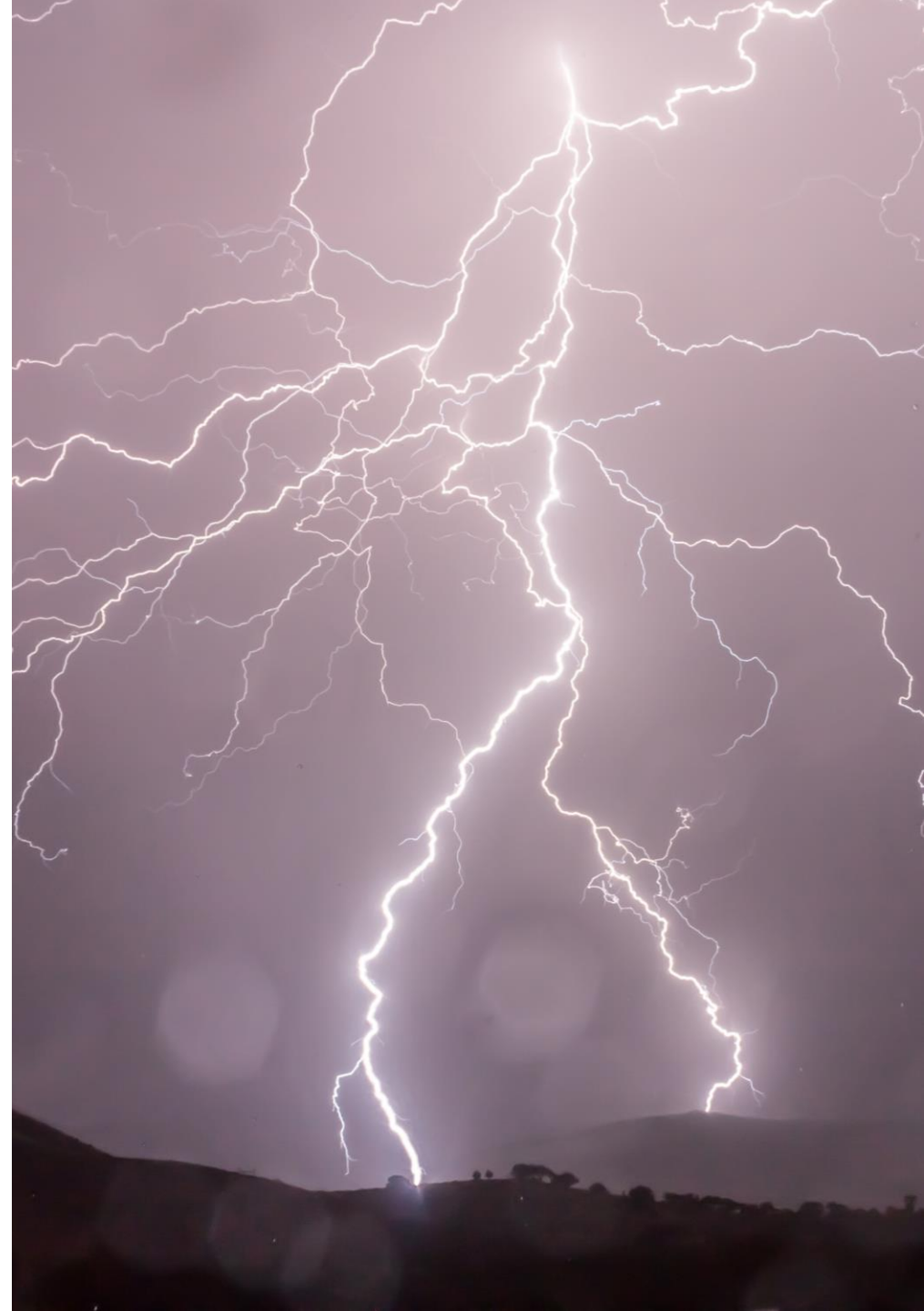
Drought – a long time with no rain, making the Earth very dry



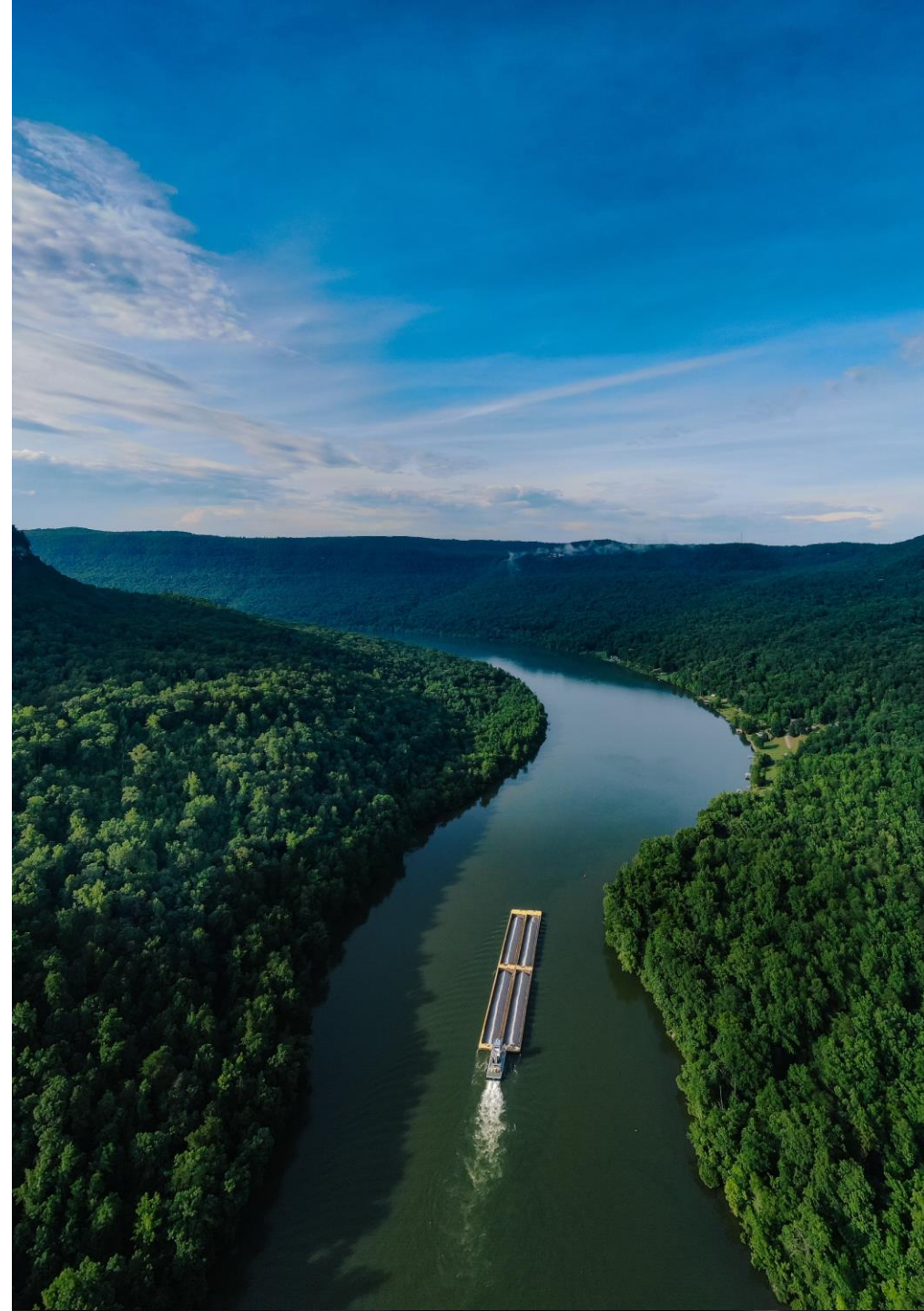
Lightning – the flashing of light from cloud to cloud or cloud to earth



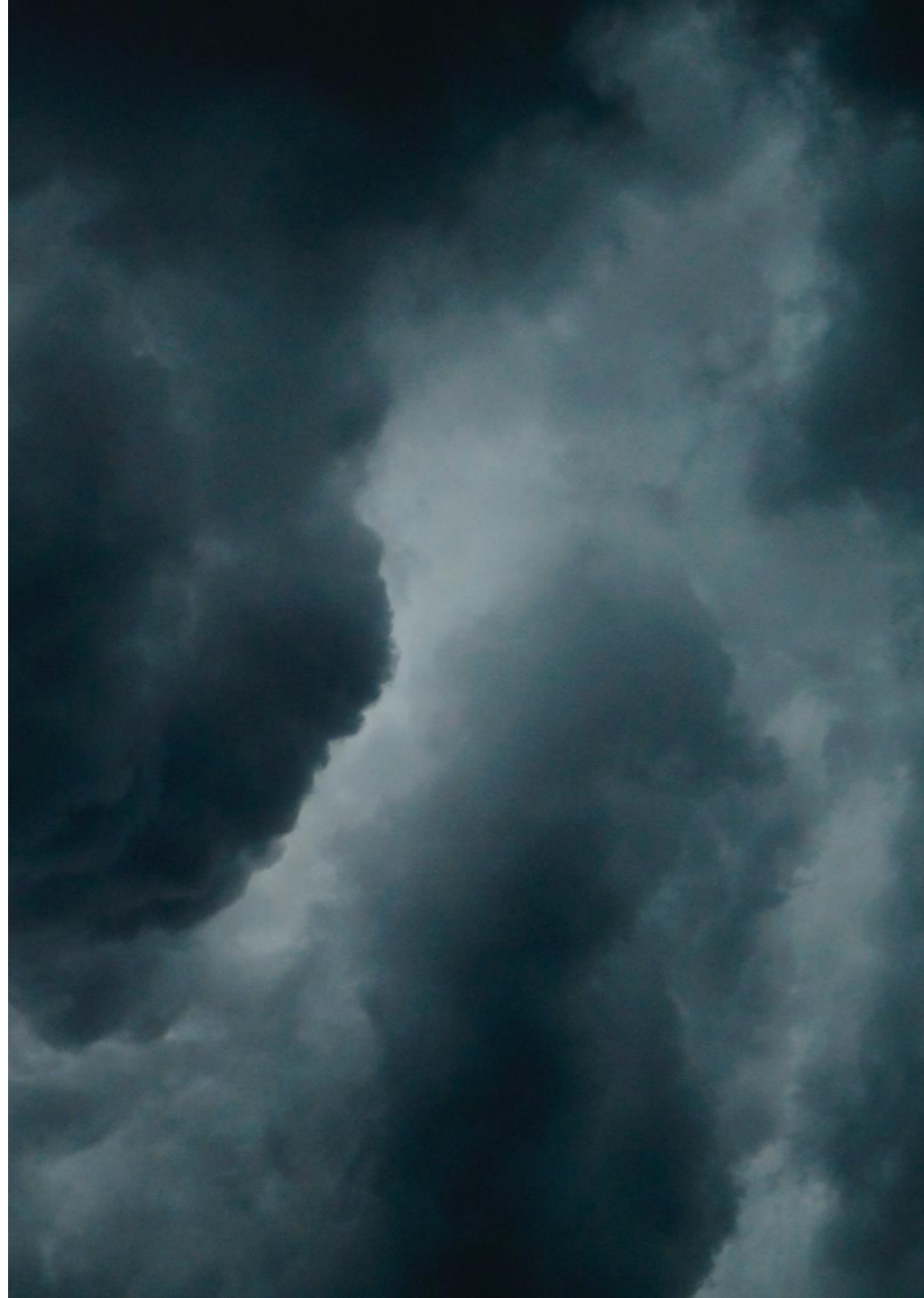
Thunder – the loud sound that follows a flash of lightning



River – a large body of water running between mountains or hills



Storm – a group of events in the sky that can include wind, rain, thunder, lightning, snow and even ice!



Flood – when water rises and spreads across land

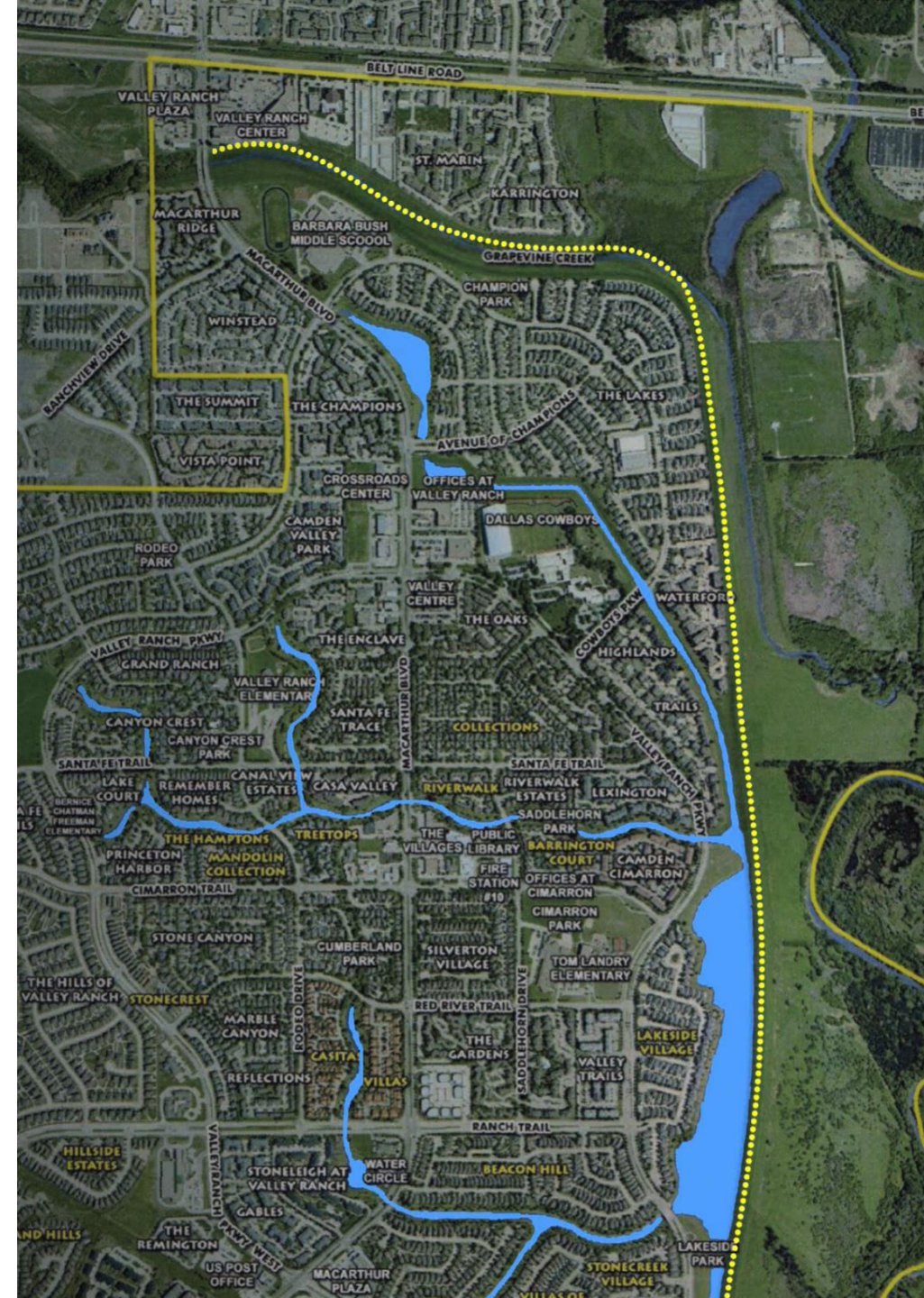


How Do These Words Relate to Valley Ranch?



Valley Ranch was built next to a large river that runs through Texas.

When it rains, the river can overflow, making the land next to the river flood.



Before houses could be built next to the river, Texas had to do something to stop the river from flooding.



Texas decided to create a flood control district for Valley Ranch. The district's job is to stop the river from flooding by providing flood control to Valley Ranch.



What is Flood Control?



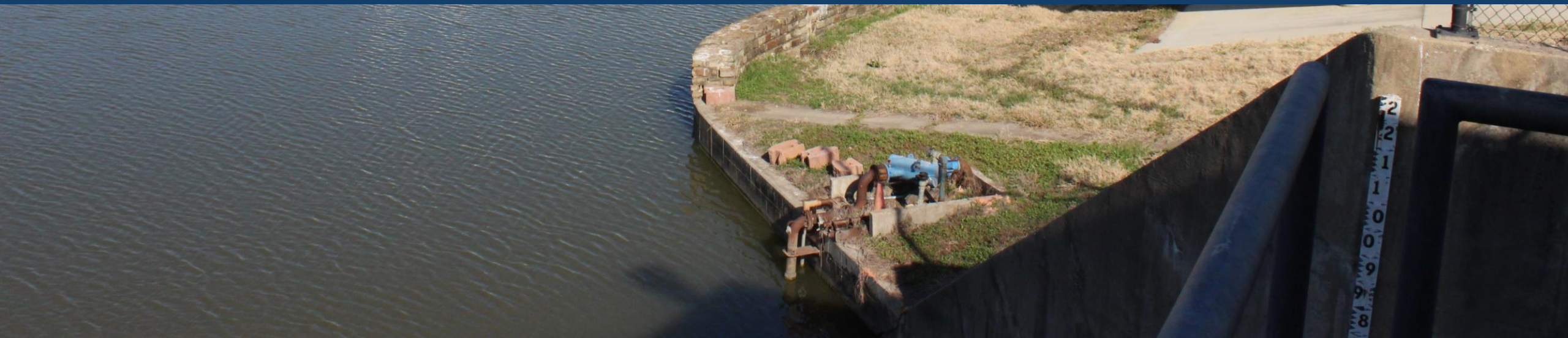
What is Flood Control?

Flood control prevents floods by using special tools to move water away from land.





Our Favorite Flood Control Tools



Levee

A barrier built along the side of a river to prevent the overflow of water.



Sump

A sump is like a big bucket or hole in the ground. When it rains, the sump fills up with water!



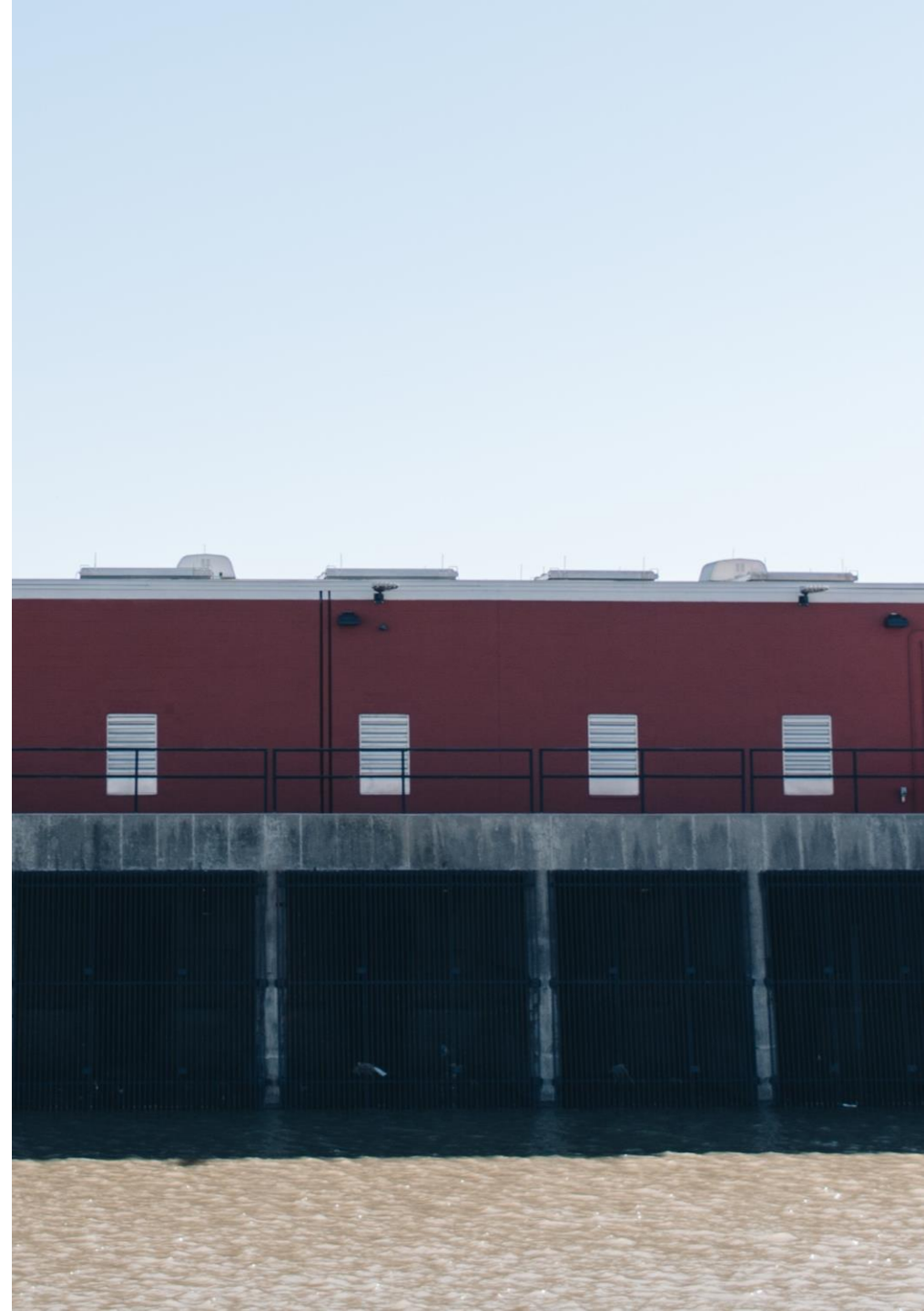
Canals

Canals are like small rivers. They run through Valley Ranch and connect to the river.



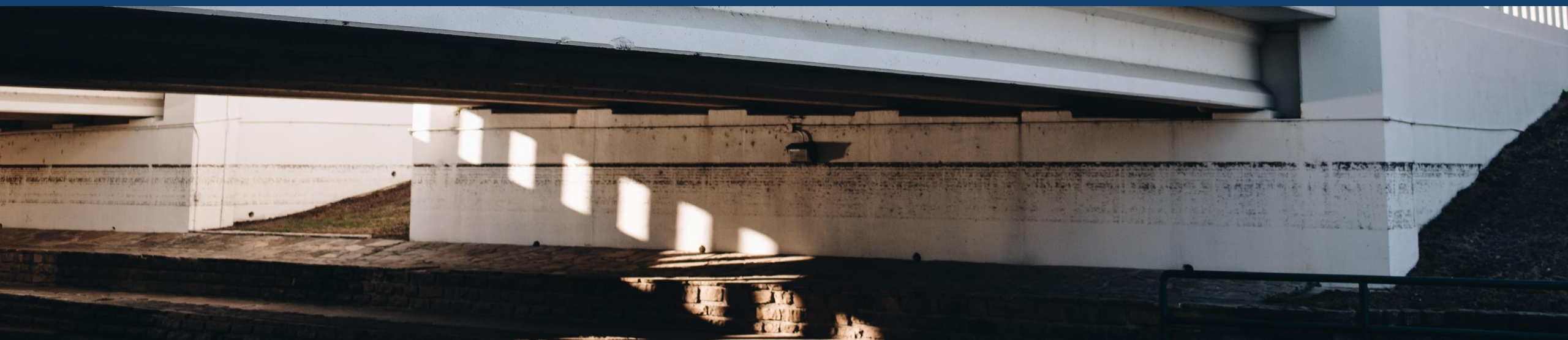
Pump Station

IFCD 3's pump station does not look like a lot from the outside. But on the inside, this building has powerful machines that pump water from Valley Ranch's canals all the way to the river.





A Final Review



A Final Review

Here are a few reminders from today's lesson.

The river next to Valley Ranch used to flood, filling the land with water.

To prevent this from happening, IFCD 3 was created.

IFCD 3 works to keep water away from homes by using canals, the pump station and other flood control tools.





Thanks for Learning With Us!

Visit IFCD3.org/IFCD3-For-Kids to continue learning about weather and flood control.

